

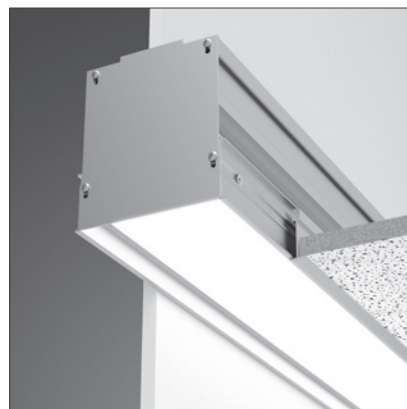
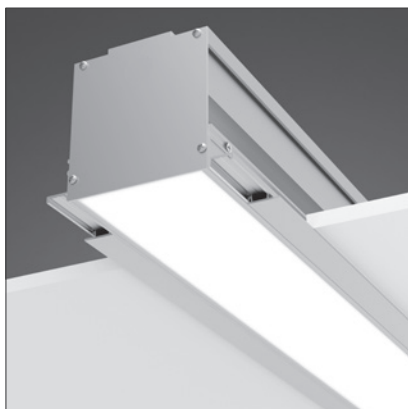
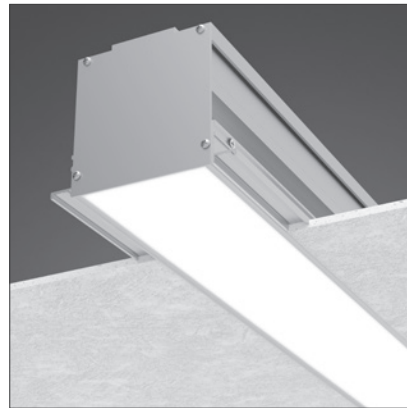
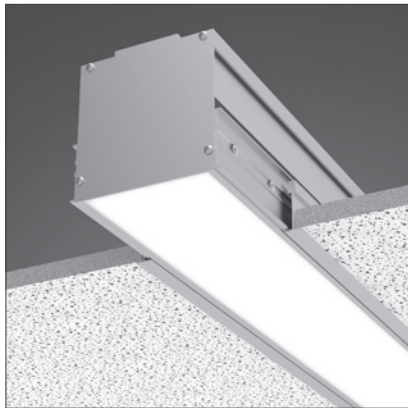
## SPECIFICATIONS

---

**QS**  
**Quickship**  
Eligible  
When ordered with ALL "QS" options

# SUPERPLANE™ 4

SP4R | Recessed | with ControlRoll™ Optics



---

Find additional images and information at  
[alwusa.com/sp4r](http://alwusa.com/sp4r)

# SUPERPLANE – SP4R

Recessed



## 1. BASE MODEL

SP4R  
SP4R/R  
SP4R/PF  
SP4R/PR

QS  
QS

4.0" flush-mount  
4.0" regressed-mount  
4.0" perimeter, flush-mount  
4.0" perimeter, regressed-mount

## SPECIFICATIONS

Page 2 of 8

Type:

## 2. LENGTH

----- QS

Total Length<sup>1,2,3</sup> (1'-250') ex: 20

<sup>1</sup>Lengths greater than 8' are comprised of multiple individual housing sections joined together, yet feature ONE continuous ControlRoll lens for the entire straight linear run.

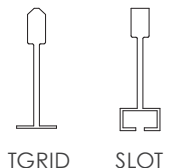
<sup>2</sup>For custom shape configurations (rectangles, squares, Ls, etc.), add up total length of all sides AND choose quantity of mitered corners in Additional Options.

<sup>3</sup>All lengths are nominal and may vary based on lamping and other specification selections. Consult factory when exact lengths (ex: 3'9") are required.

## 3. CEILING TYPE

TRIM  
MUD  
RHF  
TGRID/9/16  
TGRID/15/16  
SLOT  
ATZ/TGRID/9/16  
ATZ/TGRID/15/16  
ATZ/SLOT

QS Trimmed for install into wood, metal, drywall, etc.  
QS Trimless ONLY for mud-in installation into drywall  
QS Trimless with hidden flange for install for wood, metal, etc.  
QS 9/16" T-Grid  
QS 15/16" T-Grid  
QS 9/16" Slot T-Bar  
QS Armstrong® Techzone 9/16" T-Grid (fits 6" Techzone)  
QS Armstrong® Techzone 15/16" T-Grid (fits 6" Techzone)  
QS Armstrong® Techzone 9/16" Slot T-Bar (fits 6" Techzone)



Continued on Next Page...

QS = QuickShip-qualifying option. For the entire luminaire configuration to be QuickShip-eligible, ALL options specified in the configuration must be ones notated with "QS". NOTE: Maximum 800 ft. of QuickShip-eligible product per order.

# SUPERPLANE – SP4R

Recessed



## SPECIFICATIONS

Page 3 of 8

### 4. LED LAMPING PRIMARY

| NONE                      | Select when specifying <u>only</u> Accent Downlight Lamping |           |                 |                           |   | NONE  |
|---------------------------|---|-----------|-----------------|---------------------------|---|---|
| OUTPUT                    | DELIVERED LUMENS (LM)                                       | WATTS (W) | EFFICACY (LM/W) | CRI<br>SELECT ONE ONLY    | CCT<br>SELECT ONE ONLY                                | <b>COMPLETE CODE</b><br>Compile bold codes, separate each with a slash and enter in box to left.<br>ex: <b>MED/80/3500K</b> |
| <b>QS MIN<sup>4</sup></b> | 300   | 3.4       | 86              | <b>QS 80</b><br><b>90</b> | <b>QS 3000K</b><br><b>QS 3500K</b><br><b>QS 4000K</b> |   |
| <b>QS LOW<sup>4</sup></b> | 500   | 4.9       | 102             | <b>QS 80</b><br><b>90</b> | <b>QS 3000K</b><br><b>QS 3500K</b><br><b>QS 4000K</b> |   |
| <b>QS MED<sup>4</sup></b> | 700   | 6.4       | 110             | <b>QS 80</b><br><b>90</b> | <b>QS 3000K</b><br><b>QS 3500K</b><br><b>QS 4000K</b> |   |
| <b>QS HI<sup>4</sup></b>  | 900   | 8.5       | 106             | <b>QS 80</b><br><b>90</b> | <b>QS 3000K</b><br><b>QS 3500K</b><br><b>QS 4000K</b> |   |
| <b>QS MAX<sup>4</sup></b> | 1200  | 11.9      | 101             | <b>QS 80</b><br><b>90</b> | <b>QS 3000K</b><br><b>QS 3500K</b><br><b>QS 4000K</b> |   |
| <b>TUNE<sup>5,6</sup></b> | Tunable White   | 11.2      | 97              | N/A                       | 2700K-5700K   | <b>TUNE</b>   |
| <b>RGB<sup>5</sup></b>    | Color-Changing RGB  | 5         | N/A             | N/A                       | N/A   | <b>RGB</b>  |
| <b>RGBW<sup>6</sup></b>   | Color-Changing RGB + White                                  | 5         | N/A             | N/A                       | N/A   | <b>RGBW</b>   |

<sup>4</sup>Performance calculations are based on LM-79 test of MAX output at 80 CRI and 4000K. MIN, LOW, MED and HI calculations are extrapolations based on that testing.

<sup>5</sup>Performance calculations are extrapolated estimates for mid-range CCTs. Cooler and warmer CCTs will provide lower delivered lumens, lower lm/W and higher W/lf.

<sup>6</sup>DMX driver recommended; controller not included

### 5. DRIVER – PRIMARY

|   |   |
|---|---|
| <b>NONE</b>   | None. Select when specifying <u>only</u> Accent Downlight Lamping |
| <b>0/10V/5% QS</b>  | 0-10V dimming down to 5%  |
| <b>0/10V/1% QS</b>  | 0-10V dimming down to 1%  |
| <b>0/10V/0%</b>   | 0-10V dimming down to 0%  |
| <b>DALI</b>   | DALI dimming to 0%  |
| <b>DMX</b>  | DMX dimming to 0%   |
| <b>LDE1</b>   | Lutron® Hi-Lume EcoSystem with soft-on, fade-to-black down to 1%  |
| <b>LDE5</b>   | Lutron® 5-Series EcoSystem down to 5%                             |
| Driver/ballast options may be limited with 347 voltage. Consult factory.<br>Driver specifications provided upon request to assist with control system integration |   |

### 6. LENS

|                  |   |
|------------------|---|
| <b>NONE</b>      | None. Select when specifying <u>only</u> Accent Downlight Lamping     |
| <b>CR/S QS</b>   | ControlRoll lens with direct, symmetrical distribution                |
| <b>CR/ASY QS</b> | ControlRoll lens with direct, asymmetrical distribution (Coming Soon) |

QS = QuickShip-qualifying option. For the entire luminaire configuration to be QuickShip-eligible, ALL options specified in the configuration must be ones notated with "QS". NOTE: Maximum 800 ft. of QuickShip-eligible product per order.

# SUPERPLANE – SP4R

Recessed



## SPECIFICATIONS

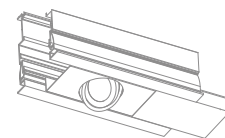
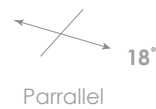
Page 4 of 8

### 7. ACCENT DOWNLIGHT

(Coming Soon)

| QS NONE | Select when specifying <u>only</u> Linear Lamping |           |                 |     |  |                         | NONE   |
|---------|---|-----------|-----------------|-----|--|-------------------------|--|
| SPOT    | DELIVERED LUMENS (LM)                             | WATTS (W) | EFFICACY (LM/W) | CRI | BEAM SPREAD (DEGREES)<br>SELECT ONE ONLY | CCT<br>SELECT ONE ONLY  | COMPLETE CODE<br>Compile bold codes, separate each with a slash and enter in box to left<br>ex: <b>DL2500/40/3500K</b> |
| DL800   | 800   | 4.8       | 167             | 80  | 25<br>40                                 | 3000K<br>3500K<br>4000K |  |
| DL1000  | 1000  | 6.1       | 164             | 80  | 25<br>40                                 | 3000K<br>3500K<br>4000K |  |
| DL1500  | 1500  | 9.7       | 155             | 80  | 25<br>40                                 | 3000K<br>3500K<br>4000K |  |

AIMING



### 8. DRIVER – ACCENT DOWNLIGHT

(Coming Soon)

NONE  
0/10V/  
LDE1  
LDE5

None. Select when specifying only Linear Lamping

0-10V dimming (Pair driver with dimming % below, ex: 0/10V/10%)

10% Standard dimming to 10% 1% Dimming to 1% 0% Premium dimming to 0%

Lutron® Hi-Lume EcoSystem with soft-on, fade-to-black down to 1%

Lutron® 5-Series EcoSystem down to 5%

Driver/ballast options may be limited with 347 voltage. Consult factory.

Driver specifications provided upon request to assist with control system integration

### 9. ACCESSORY – ACCENT DOWNLIGHT

(Coming Soon)

NONE  
HEX  
SNT

None  
Hexcell louver  
Snoot



HEXCELL LOUVER

SNOOT

### 10. QUANTITY – ACCENT DOWNLIGHT

(Coming Soon)

NONE  
---

None. Select when specifying only Linear Lamping

Enter total quantity downlights per run length

For total quantity considerations, please note each downlight requires 4.5" of linear length in the housing

QS = QuickShip-qualifying option. For the entire luminaire configuration to be QuickShip-eligible, ALL options specified in the configuration must be ones notated with "QS". NOTE: Maximum 800 ft. of QuickShip-eligible product per order.

© 2017 Architectural Lighting Works. Specifications subject to change without notice. Limited warranty. Complete terms available on website.

A 1035 22nd Avenue, Unit 1 · Oakland, CA 94606 P 510.489.2530 E TalkToUs@alwusa.com W alwusa.com

# SUPERPLANE – SP4R

Recessed



## SPECIFICATIONS

Page 5 of 8

### 11. FINISH

WH

QS

White powdercoat (standard)

SV

Silver powdercoat

BK

Black powdercoat

WH/AM



White antimicrobial powdercoat for healthcare environments

RAL/ \_\_\_\_

Specify RAL powdercoat code (ex: #RAL/3003)

### 12. VOLTAGE

120

120 volt

277<sup>7</sup>

277 volt

UNV

QS

Universal voltage

347

347 volt

<sup>7</sup>For dimming with DL800-DL1500 using 277 volt, specify HILUME/A3 or 0/10V/0 driver only

### 13. ADDITIONAL OPTIONS

NONE

QS

None

EMC/\_\_\_\_<sup>8</sup>

QS

Emergency circuit (indicate total quantity, ex: EMC/4)

EMB/\_\_\_\_<sup>8</sup>

QS

Emergency battery pack (indicate total quantity, ex: EMB/4)

ENLGHT/\_\_\_\_<sup>9,10,11</sup>

QS

Enlighted® 0-10V embedded smart sensor (occupancy, daylight, networking and more)

OS/\_\_\_\_<sup>10,11</sup>

0-10V remoted occupancy sensor (indicate total quantity, ex: OS/4)

PH/\_\_\_\_<sup>10,11</sup>

0-10V remoted photocell/daylight sensor (indicate total quantity, ex: PH/4)

MC/\_\_\_\_

QS\*

Mitered corners (indicate total quantity, ex: MC/4 for a rectangle)

<sup>8</sup>Consult factory for available options

<sup>9</sup>Enlighted Gateway and Energy Manager (by others) plus programming required. Learn more at [enlightedinc.com](http://enlightedinc.com).

<sup>10</sup>Compatible with 0-10V driver only. Contact factory for alternative options.

<sup>11</sup>Select quantity of 1 for every 8 ft. (ex: ENLGHT3 for a 24' fixture run; OS4 for a 32' fixture run)

\*45° mitered cuts forming 90° corners only for QuickShip qualification

QS = QuickShip-qualifying option. For the entire luminaire configuration to be QuickShip-eligible, ALL options specified in the configuration must be ones notated with "QS". NOTE: Maximum 800 ft. of QuickShip-eligible product per order.

© 2017 Architectural Lighting Works. Specifications subject to change without notice. Limited warranty. Complete terms available on website.

A 1035 22nd Avenue, Unit 1 · Oakland, CA 94606 P 510.489.2530 E [TalkToUs@alwusa.com](mailto:TalkToUs@alwusa.com) W [alwusa.com](http://alwusa.com)

# SUPERPLANE – SP4R

Recessed



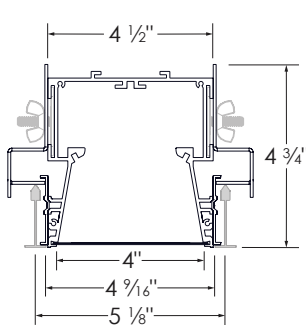
## DIMENSIONS

## SPECIFICATIONS

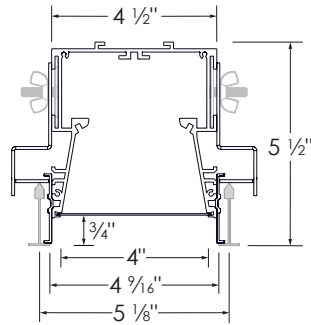
Page 6 of 8

### TGRID

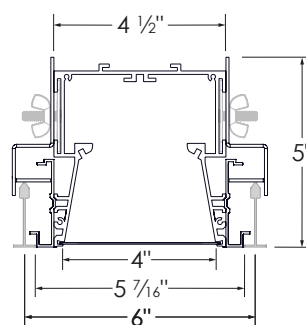
Add 3" to height measurement provided to determine total plenum clearance required with installed mounting hardware



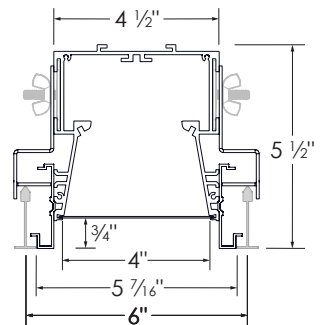
**SP4R**  
TGRID/9/16



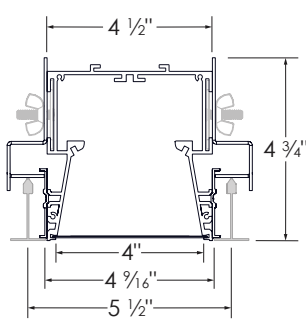
**SP4R/R**  
TGRID/9/16



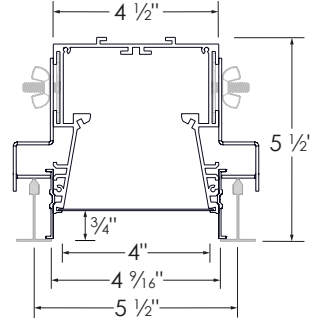
**SP4R**  
ATZ/TGRID/9/16



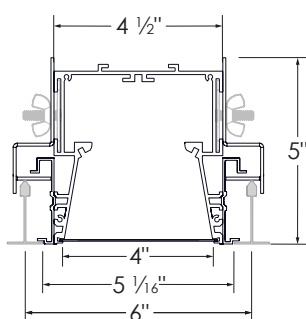
**SP4R/R**  
ATZ/TGRID/9/16



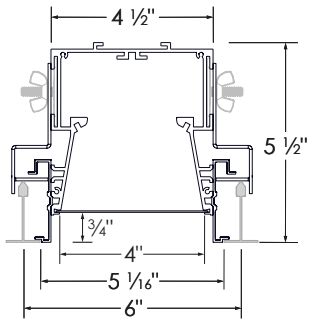
**SP4R**  
TGRID/15/16



**SP4R/R**  
TGRID/15/16



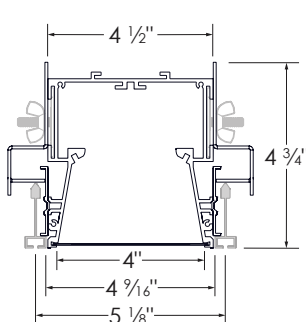
**SP4R**  
ATZ/TGRID/15/16



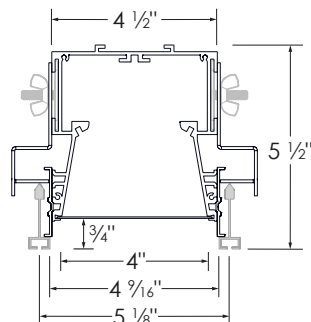
**SP4R/R**  
ATZ/TGRID/15/16

### SLOT

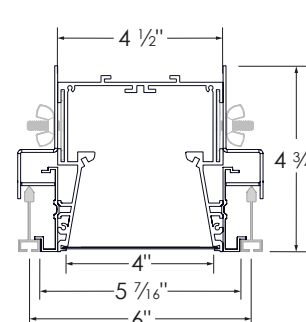
Add 3" to height measurement provided to determine total plenum clearance required with installed mounting hardware



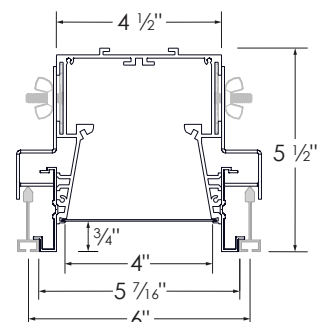
**SP4R**  
SLOT



**SP4R/R**  
SLOT



**SP4R**  
ATZ/SLOT



**SP4R/R**  
ATZ/SLOT

# SUPERPLANE – SP4R

Recessed

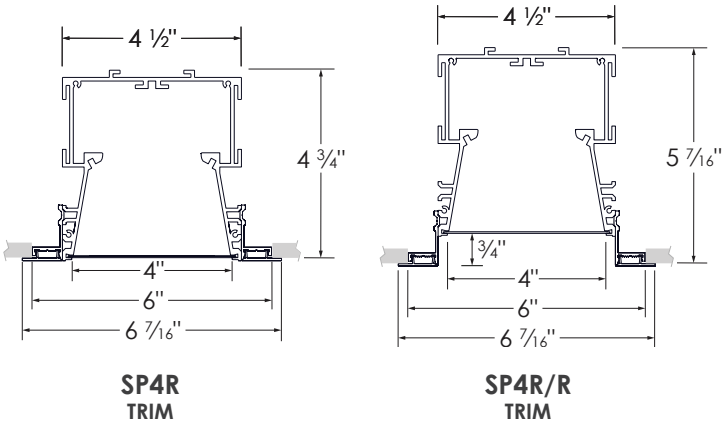


## DIMENSIONS (cont'd)

SPECIFICATIONS  
Page 7 of 8

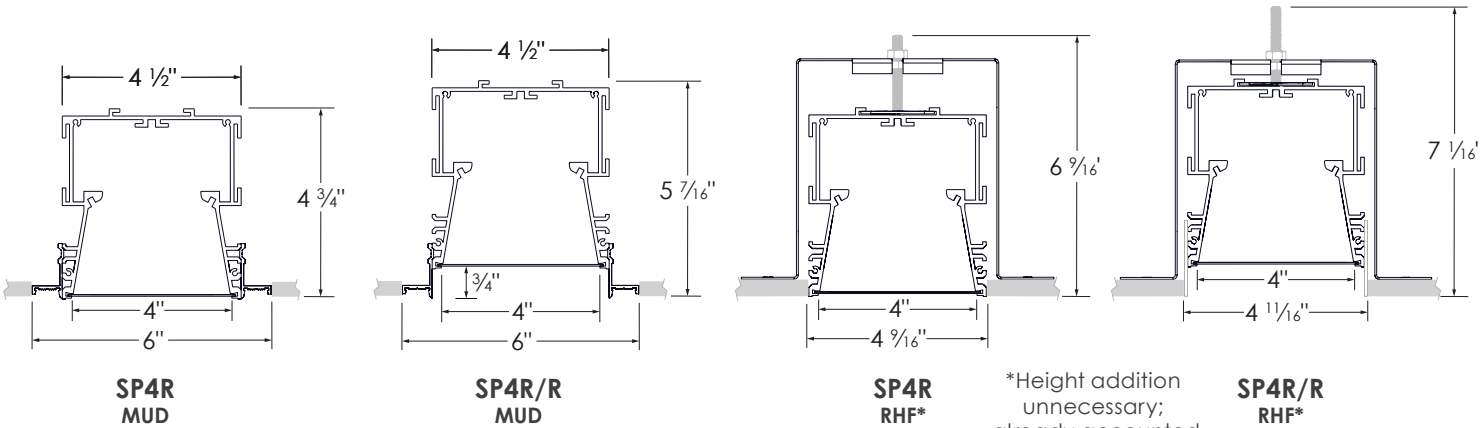
### TRIM

Add 1 13/16" to height measurement provided to determine total plenum clearance required with installed mounting hardware



### TRIMLESS

Add 1 13/16" to height measurement provided to determine total plenum clearance required with installed mounting hardware.



### PERIMETER



SP4R  
TRIM



SP4R/R  
TRIM

# SUPERPLANE – SP4R

Recessed



## LED PERFORMANCE

For standard MIN-MAX lampings: L80 >50,000 hours. 80+ or 90+ CRI. Luminous flux +/- 5%.

## ELECTRICAL

ETL listed for damp location with lens.



## OPERATING TEMPERATURE

Luminaire should be installed and operated ONLY in environments with an ambient temperature range of -4° F (-20° C) to 122° F (50° C). Operating the luminaire in environments outside of this range voids the warranty AND may damage the product or adversely impact lamp life, lumen output and color consistency.

## EMERGENCY

Can be wired for emergency circuit (EMC) and/or battery backup (EMB). Consult factory for details.

## WARRANTY

Limited 5-year warranty. Details: [alwusa.com/warranty](http://alwusa.com/warranty).

## HOUSING

100% recyclable, extruded architectural grade T6063 aluminum with .09" minimum wall thickness and maintenance.

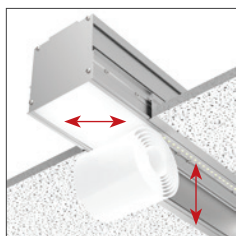
## CONFIGURATIONS WITH MITERED CORNERS

Configured shapes possible with optional mitered corner (MC) inner angles of 60° to 180°.



## CONTROL ROLL™ OPTICS

The optically engineered, ControlRoll lens provides smooth, uniform and seamless illumination up to 250' while dynamically controlling output and reducing glare. The ControlRoll lens rolls out and snaps into the housing channel for easy installation.

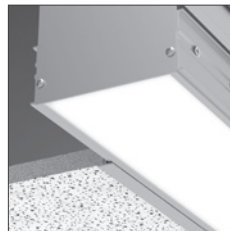


## SPECIFICATIONS

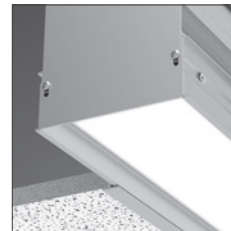
Page 8 of 8

## MOUNTING OPTIONS

Choose from flush-mount (lensed surface sits even with ceiling plane) or regressed-mount (lensed surface sits 3/4" above ceiling plane).



FLUSH-MOUNT



REGRESSED-MOUNT

## FINISH

Standard finish is white powdercoat (WH). Silver (SV), black (BK) and custom color (RAL) powdercoat options also available. For healthcare environments, a white, antimicrobial finish (WH/AM) is available.



## INTEGRAL DOWNLIGHTS

Optional, aimable accent downlights deliver 800-1500 lumens with a beam spread of 25° or 40°. Hex cell (HEX) and snoot (SNT) accessories available.



## INTEGRAL SENSOR

Optional, occupancy detection (OS) and/or daylight harvesting (PS) sensor available. Or upgrade to an optional Enlighted Smart Sensor (ENLGHT) with additional capabilities. Contact factory for details.

